



Sea Crestz

@ Kuantan Waterfront Resort City



**THIS IS
WATERFRONT
LIVING**

**THE HEIGHT
OF OCEANFRONT
LIVING**

**YOUR
SEASIDE
HEAVEN**

SEACRESTZ.COM.MY



The Height of Oceanfront Living

“Sea Crest” typically refers to the highest point of a wave as it forms and begins to break, creating a crest or peak. It's the moment of culmination in the wave's journey, where it reaches its pinnacle before eventually crashing down. Metaphorically, it can signify reaching the peak of an experience or journey, capturing a sense of achievement, excitement, and vitality. In the context of Sea Crestz, it could symbolize the pinnacle of seaside living, where visitors can experience the full splendor and adventure of life by the sea.

Nestled along the pristine shores of Kuantan, Sea Crestz emerges as a beacon for the adventurous soul seeking solace amidst the beauty of the sea. Inspired by the untamed spirit of exploration, Sea Crestz invites you to embark on a journey where every moment is infused with the thrill of discovery and the serenity of resort living.



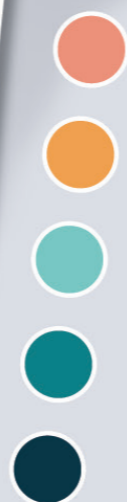


*Favourite
Color*

Deep Dive

Vitamin Sea

Coral



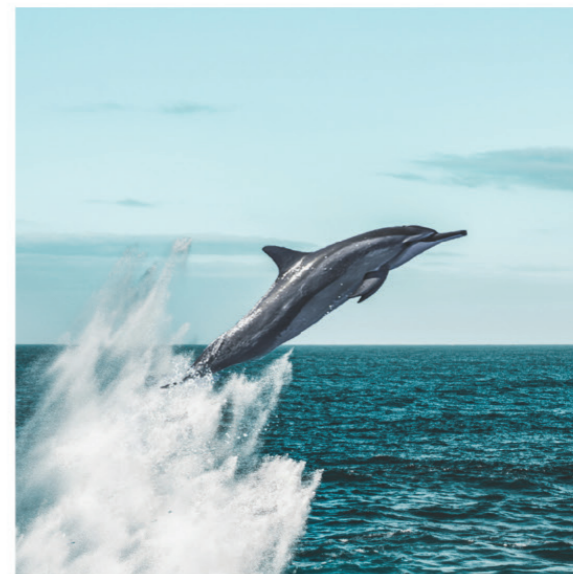
Sunset

Where the Sea Inspires

The sea mirrors every shade of the setting sun, transitioning the sky from a fiery blaze to a deep, tranquil blue, dotted with the first stars of the evening. The day's worries and noise seem to fade with the light, leaving only peace.

SEA CRESTZ

001

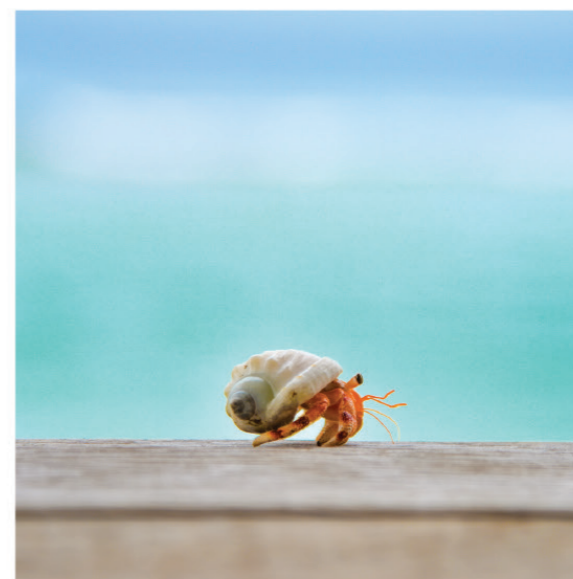


001



KUANTAN WATERFRONT RESORT CITY

001



SEA CRESTZ

001



001





A Seaside Icon

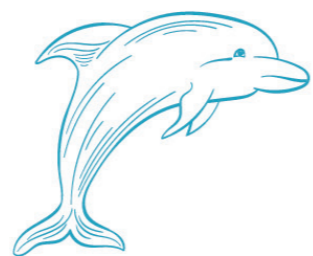
As the owner of a Sea Crestz oceanfront serviced apartment, you will have access to a variety of enticing attractions nearby that fully capitalize on the property's unique location in the state capital. Sea Crestz is the latest phase of the Kuantan Waterfront Resort City development, a thrilling new project spanning over hectares of land in Kuantan. This integrated resort, leisure, and entertainment destination is poised to become a lively city icon, providing a one-of-a-kind waterfront living experience. Living in this 456-unit development also grants you direct access to the beach and waterfront restaurants, offering breathtaking views of the South China Sea.

Where the Skyline Meets the Shoreline

Color



You're just steps away from the warm sandy beach and cool ocean breeze at Sea Crestz. Embodying laidback luxury in a dynamic waterfront location, this property is centrally located in Kuantan's newest development - Kuantan Waterfront Resort City. At Sea Crestz, you can cool off with a refreshing swim in the resort-style pool or invite friends to shoot hoops at the in-house basketball court. As the sun sets, unwind and relax in the sky garden, enjoying the soothing sea air. It's a home away from home where you can embrace an active lifestyle surrounded by impeccable amenities, breathtaking sea views, and endless opportunities for coastal adventure.

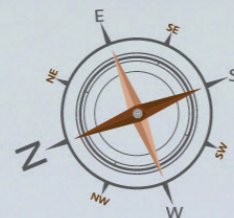


Layout Plans



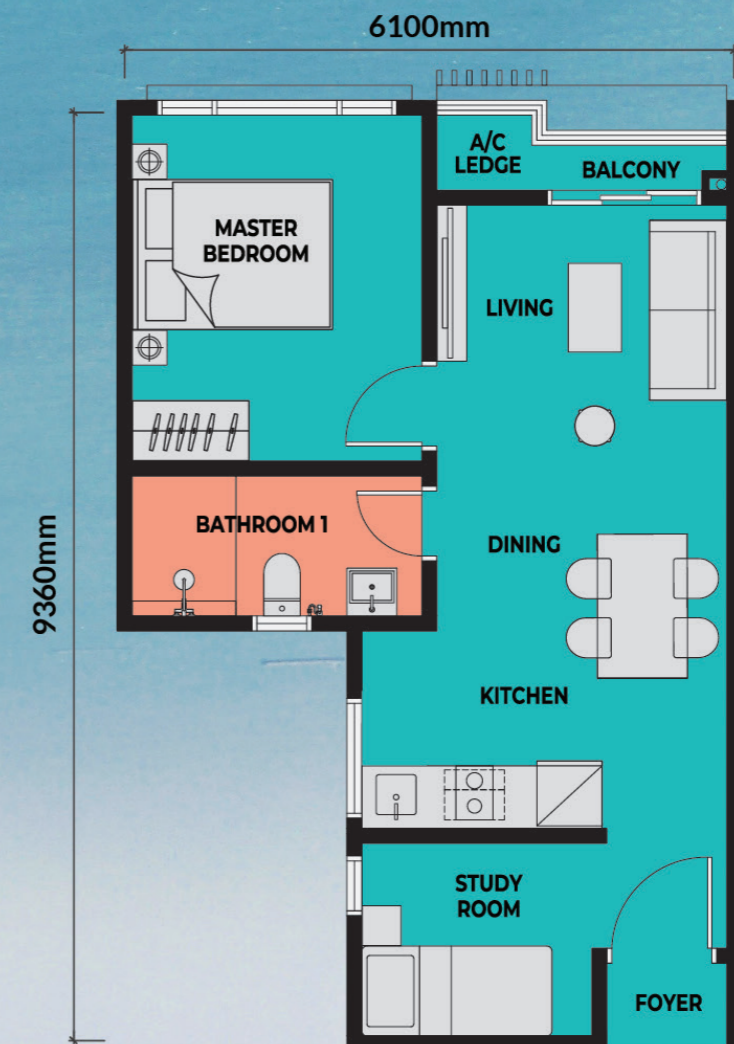
TYPE A (506 sqft) TYPE B (850 sqft) TYPE C (1,012 sqft)

SOUTH CHINA SEA



MASJID NEGERI PAHANG /
KUANTAN 188

TYPE A (1R + 1B)
506 sq.ft. | 47 sm



TYPE B (3R + 2B)
850 sq.ft. | 79 sm



TYPE C (3R + 3B)
1,012 sq.ft. | 94 sm



Facilities Plan



GROUND FLOOR

1. Grand Entrance
2. Drop-off
3. Grand Lobby
4. Seaside Plaza

LEVEL 6

1. Surau
2. Sauna
3. Steam Bath
4. Herbs Garden
5. Jacuzzi
6. Wading Pool
7. Wet Fun Play
8. Kidstopia
9. Gymnasium
10. Play Adventure
11. Workout Station
12. Hoop Court

13. Reflexology Deck
14. Infinity Pool
15. Open Pool Spa
16. Aqua Gym
17. BBQ Area
18. Link Bridge

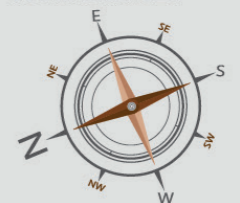
LEVEL 21

1. Sky Garden
2. Sky Terrace

LEVEL 23

1. Multipurpose Hall

SOUTH CHINA SEA



MASJID NEGERI PAHANG /
KUANTAN 188

Your Personal Enclave

The expansive 1 to 3 bedroom units at Sea Crestz @ KWRC boast large windows with panoramic ocean views and private glass balconies with sweeping views of the South China Sea. A welcoming entryway lobby, modern finishes, high ceilings, and more, make every unit here a five-star experience.



SEA CRESTZ

001



001

KUANTAN WATERFRONT RESORT CITY

SEA CRESTZ

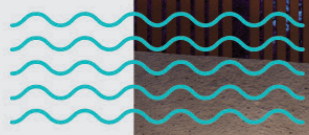
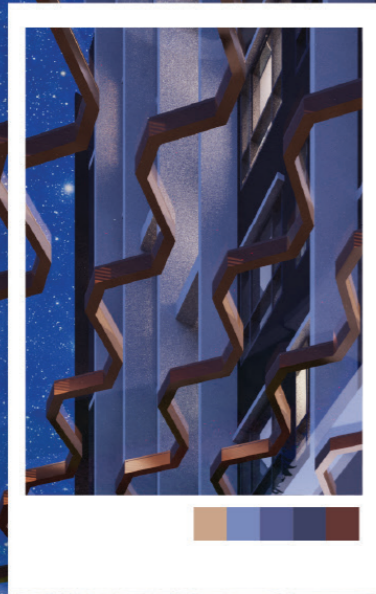
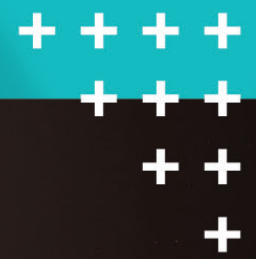
001



001



001



Artist's Impression

**GRAND
LOBBY**



KIDSTOPIA

Artist's Impression

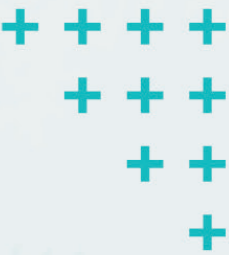


GYMNASIUM



Artist's Impression



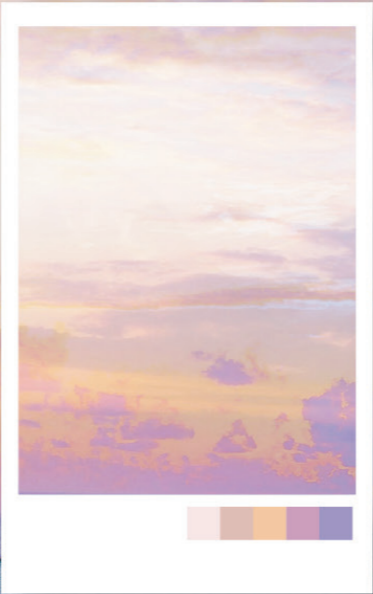


SUN

SUNSET

SEA

SEACRESTZ.COM.MY



Artist's Impression

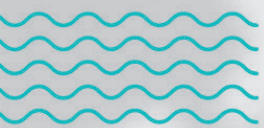


INFINITY
POOL





**WET FUN
PLAY**



SEASIDE PLAZA





Artist's Impression

MULTIPURPOSE HALL



Your Seaside Heaven

A 10-minute drive away is Kuantan's glittering Teluk Cempedak Beach, Kuantan City Mall, East Coast Mall and even closer are the three lesser-known beaches of Tanjung Sisek, and Tembeling; all yours to explore in peace. Kuantan's town centre is minutes away via a bridge across the Kuantan River and bucolic kampung your way south; whether it's local delicacies you're after or the chicest handicrafts of the area, none are far away.

But Sea Crestz is more than just a destination - it's a sanctuary for the adventurous at heart, perched at the crest of the sea. So come, indulge your sense of adventure and surrender to the allure of Sea Crestz, where every moment is an invitation to explore, discover, and rejuvenate at the crest of the sea.



  **EXSIM Kuantan Sales Gallery**

Lot 120622,
Persisiran Pantai Tanjung Lumpur Mukim,
26060 Kuantan, Pahang

T: 09 - 534 3119 **M:** 012 - 504 2278
W: seacrestz.com.my

KUANTAN WATERFRONT RESORT CITY SDN. BHD.
[202301048723 (1542637-U)]

D-35-01, Level 35, EXSIM Tower,
Millerz Square @ Old Klang Road, Megan Legasi,
No. 357, Jalan Kelang Lama, 58000 Kuala Lumpur.

T: 03 7963 1999 **E:** info@exsim.com.my
W: exsim.com.my

• **PEMAJU:** KUANTAN WATERFRONT RESORT CITY SDN. BHD. • **NO LESEN PEMAJU:** 30830/08-2029/0172(A) • **TEMPOH SAHLAKU:** 05/08/2024 - 04/08/2029 • **NO. PERMIT IKLAN & JUALAN:** 30830-1/03-2028/0233(A)-(S) • **TEMPOH SAHLAKU:** 20/03/2025 - 19/03/2028 • **PIHAK BERKUASA TEMPATAN:** MAJLIS BANDARAYA KUANTAN • **KELULUSAN PELAN BANGUNAN:** (19)DLM.MBK/R/B:PB/49/2024-E BERTARIKH 25/10/2024 • **TARIKH JANGKA SIAP:** March 2029 • **PEMBANGUNAN:** 456 UNIT PANGSAPURI SERVIS 31 TINGKAT • **HARGA MINIMUM - MAKSIMUM:** RM 509,747.00 - RM1,847,099.00 • **PEGANGAN TANAH:** PAJAKAN 99 TAHUN BERAKHIR 02/02/2123 • **BEBANAN:** HONG LEONG BANK BERHAD • **SEKATAN KEPENTINGAN:** TANAH INI TIDAK BOLEH DIPINDAHMILIK, DIPAJAK, DIGADAI MELAINKAN SETELAH MENDAPAT KEBENARAN BERTULIS DARIPADA PIHAK BERKUASA NEGERI.

All information, items and/or products herein contained and/or displayed, including but not limited to measurement, features, materials, specifications, brands, colours, plans, drawings, images, pictures, visuals renditions, illustrations and presentation of interiors, furniture and fittings layout, landscapes, roads, access, lifestyle, scale models, show units and/or development are artist's impressions/renderings for illustration purposes only and are subject to change as may be required and/or recommended by the relevant authorities and/or the developer's architects, engineers and/or consultants without prior notification to you. Nothing contained herein shall be taken as identical representation of the actual state thereof or constitute or be construed to constitute an offer, a contract, part of the sale and purchase agreement (SPA), a representation and/or warranty on the part of the developer, unless expressly and specifically incorporated in the SPA. Prospective purchasers are advised to read and scrutinize the SPA together with its enclosures or to engage relevant independent professionals for advice prior to signing of the SPA. The developer and/or other related companies and parties shall neither be held responsible for any claims, error or inaccuracy nor be liable for any losses, damages, costs, expenses, or liabilities that may be incurred, suffered or sustained resulting from any reliance on any information, items and/or products herein contained and/or displayed or any part thereof.